

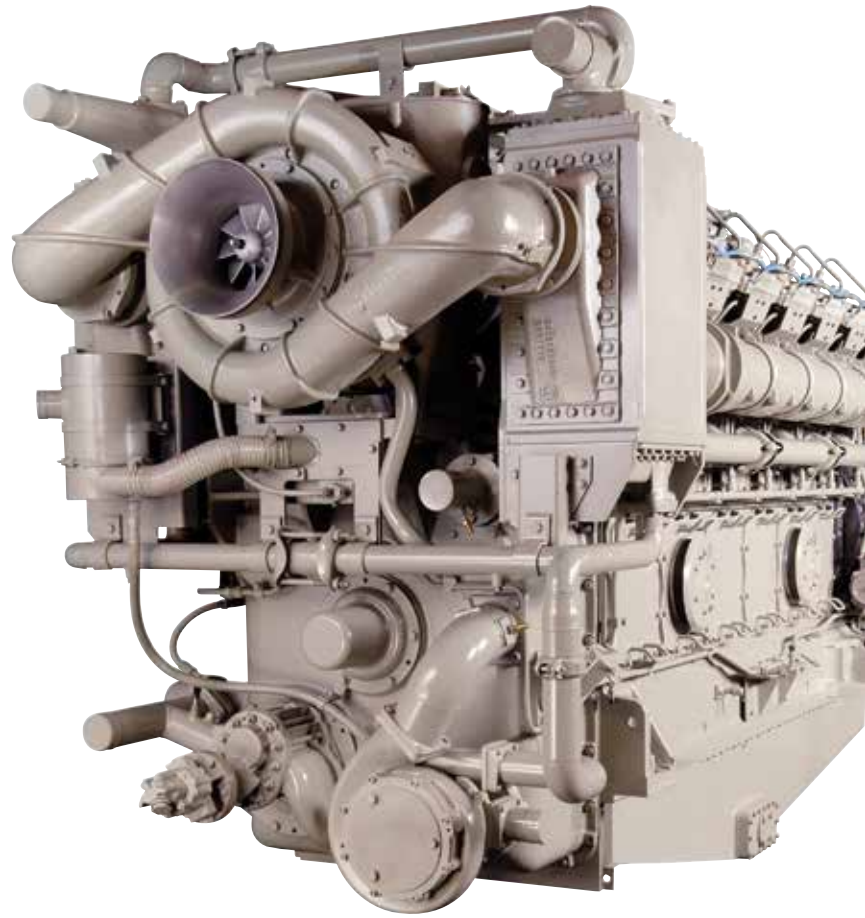
Powerful, dependable, fuel-efficient

V228 Series Diesel Engines for stationary gensets

As one of the world's leading makers of medium-speed diesel engines, GE Transportation's proven technology also is used for continuous and standby power in stationary gensets. These advanced diesel engines deliver a powerful, dependable and fuel-efficient power source even in the world's harshest conditions.

V228 Series Diesel Engine

For dependability, fuel efficiency and lower life-cycle costs, GE Transportation's V228 Series Diesel Engine is among the best in its class. An alternative to high-speed, high-cost power, this engine delivers a 3 to 5% fuel savings and nearly double the mean time between maintenance cycles in a typical power operation. Its high-capacity turbocharger, electronic fuel injection and efficient combustion management make fuel and lube oil consumption among the lowest in the industry.



Key features

- Available in 8-, 12- and 16-cylinder models
- Offers continuous power from 1,307 to 2,905 kw
- Modularized construction provides maintenance ease
- Rugged construction and quality-assured parts allow engine to run cost effectively for 20 years or more



V228 Series Diesel Engine specifications

Model	8V228	12V228	16V228
Power output at 900 rpm			
Continuous	1,307 bkW	1,961 bkW	2,614 bkW
Prime	1,438 bkW	2,157 bkW	2,876 bkW
Limited time running	1,569 bkW	2,353 bkW	3,137 bkW
Power output at 1,000 rpm			
Continuous	1,453 bkW	2,179 bkW	2,905 bkW
Prime	1,598 bkW	2,397 bkW	3,196 bkW
Limited time running	1,743 bkW	2,615 bkW	3,486 bkW
Engine data			
Number of cylinders	8	12	16
Stroke cycle	4	4	4
Cylinder arrangement	45-degree V	45-degree V	45-degree V
Bore	228.6 mm (9 in.)	228.6 mm (9 in)	228.6 mm (9 in)
Stroke	266.7 mm (10.5 in.)	266.7 mm (10.5 in)	266.7 mm (10.5 in)
Compression ratio	15.7:1	15.7:1	15.7:1
Engine dimensions			
Height w/shallow pan	2,258 mm (89 in)	2,258 mm (89 in)	2,258 mm (89 in)
Length	3,222 mm (127 in)	4,059 mm (160 in)	2,258 mm (89 in)
Width	1,725 mm (68 in)	1,725 mm (68 in)	1,725 mm (68 in)
Dry weight	13,691 kg (30,185 lbs)	17,780 kg (39,200 lbs)	22,135 mm (48,800 lbs)

To learn more,
visit www.getransportation.com.



GE, the GE Monogram, imagination at work, ecomagination and all other trademarks, and service marks, unless otherwise noted, are owned or licensed by General Electric Company or its subsidiaries. All other brand names, product names or trademarks belong to their respective holders.

Copyright © 2012, General Electric Company. All rights reserved.

